

Family Partnership Takes Shape with Graphic Concrete and Precast

The Family Partnership (TFP) is an innovative and impactful 141-year-old community-based organization that serves families in Minneapolis impacted by poverty and adverse circumstances. Over the last five years, demand for TFP's programs has risen by 50 percent, leaving many families without crucial support. The new building will provide three times more space for TFP programs.

Wells Concrete recently completed installation of the exterior facade for this project with more than 14,000 sq. ft. of architectural precast wall panels.

Wells has been expanding its architectural capabilities to stay current with modern architectural demands and Graphic Concrete is one of these new offerings. This feature allows design teams creative benefits by creating an opportunity to put a personal stamp on buildings of the future.

[> Read More](#)



Island Resort Hotel & Water Park Project Showcase

This past June, Wells announced the availability of its Infinite Facade product and partnership with Clark Pacific in the Facades Consortium Group, LLC. One of our current projects is utilizing this single source solution for the complete building envelope for an expansion to an upper Michigan resort and casino.



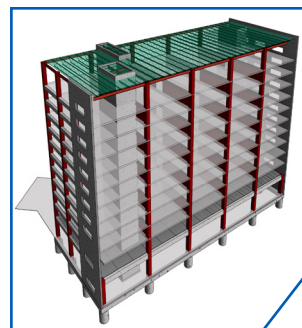
The Hannahville Indian Community Tribal Council approved a \$30 million expansion of the Island Resort and Casino to include an 11-story hotel expansion providing over 100 guest rooms. Engineering, design and offsite prefabrication is ongoing while onsite construction originally began in June 2020 with expected completion during the 2021 calendar year.

Wells is currently in the prefabrication phase of this total precast project that includes 100,000 sq. ft. of precast floor and roof deck as well as 75,000 sq. ft. of exterior enclosure panels and 147 preinstalled windows. All precast components include beams, column, stairs and elevator shafts.

The benefits offered by total precast concrete systems add a variety of assets to the owner's, architect's, general contractor's, and structural engineer's bottom lines — and ultimately benefit the end user with accelerated occupancy.

Infinite Facade

Schedule and budget were extremely important to the design team and therefore Infinite Facade was selected as the primary building enclosure system because of its inherent benefits recognized by the team. The system accelerates the construction schedule with the implementation of preinstalled windows, sprayfoam, and a drywall ready substrate, while reducing trades on-site, and providing instant enclosure, which allows interior construction to start sooner during cold Midwestern winters. Factory-installed insulation provides the required thermal barrier needed in this climate zone.



The lightweight system provides an additional benefit to Wells Concrete and its partners as Wells can travel outside its normal radius as this cost-effective system allows an expanded market reach.

[> Read More](#)

Brighton, CO Facility Open House Celebration September 3, 10, 17, & 24, 2020 | 3:00-6:00 PM MT

We are excited to launch the grand opening of our new office and production facility in Brighton, CO with a series of open houses every Thursday in September. If you are interested in attending on of these events, use the registration button below and we will follow-up to see which date works best for you.

[> Register Here](#)



Research & Development Update

Wells continues research and development on our light weight precast cladding systems. As we continue to improve our product design we constantly are testing and analyzing our panel and joint treatment details.

To improve installation details and on-site coordination Wells has created a mock up structure that will be able to be used with our Infinite Facade panels. This structure will allow us to install panels with various connection and joint treatment details. This visual and physical example will allow us to better coordinate and communicate how our system works with other trades on the job-site.



We invite you to join Wells in attending our complimentary one-hour accredited continuing education webinar series. AIA 1.0 HSW/LU 1.0 PDH 0.1 CEU

- SEPTEMBER 2, 2020 | 11:00 AM CST Thermal Mass, Energy Codes, and Precast Concrete [REGISTER TODAY](#)
- DECEMBER 9, 2020 | 11:00 AM Precast for Schools and FEMA, Storm Shelters
- MARCH 10, 2021 | 11:00 AM Designing Parking Structures and Maintenance Schedules
- JUNE 10, 2020 | ON-DEMAND Designing Total Precast Office Buildings

[> Register or learn more](#)



Conversations with the Facade Squad

Expanding on our recent Infinite Facade webinar, we are launching a new series - Conversations with the Facade Squad. Join us once a month for quick 30 minute conversations on all things facades. We promise this won't be boring, just two guys that love to talk about facades, materials and design. [> Register or learn more](#)

- SEPTEMBER 15, 2020 | 12:00 PM CST Prefabricated Facades
- OCTOBER 13, 2020 | 12:00 PM Design Materiality & Versatility
- NOVEMBER 10, 2020 | 12:00 PM How to Design with Target Value Design
- DECEMBER 8, 2020 | 12:00 PM Sustainability and Facade Design

Blogs

Have you been following our Blog posts? [Subscribe](#) today to receive updates every week.