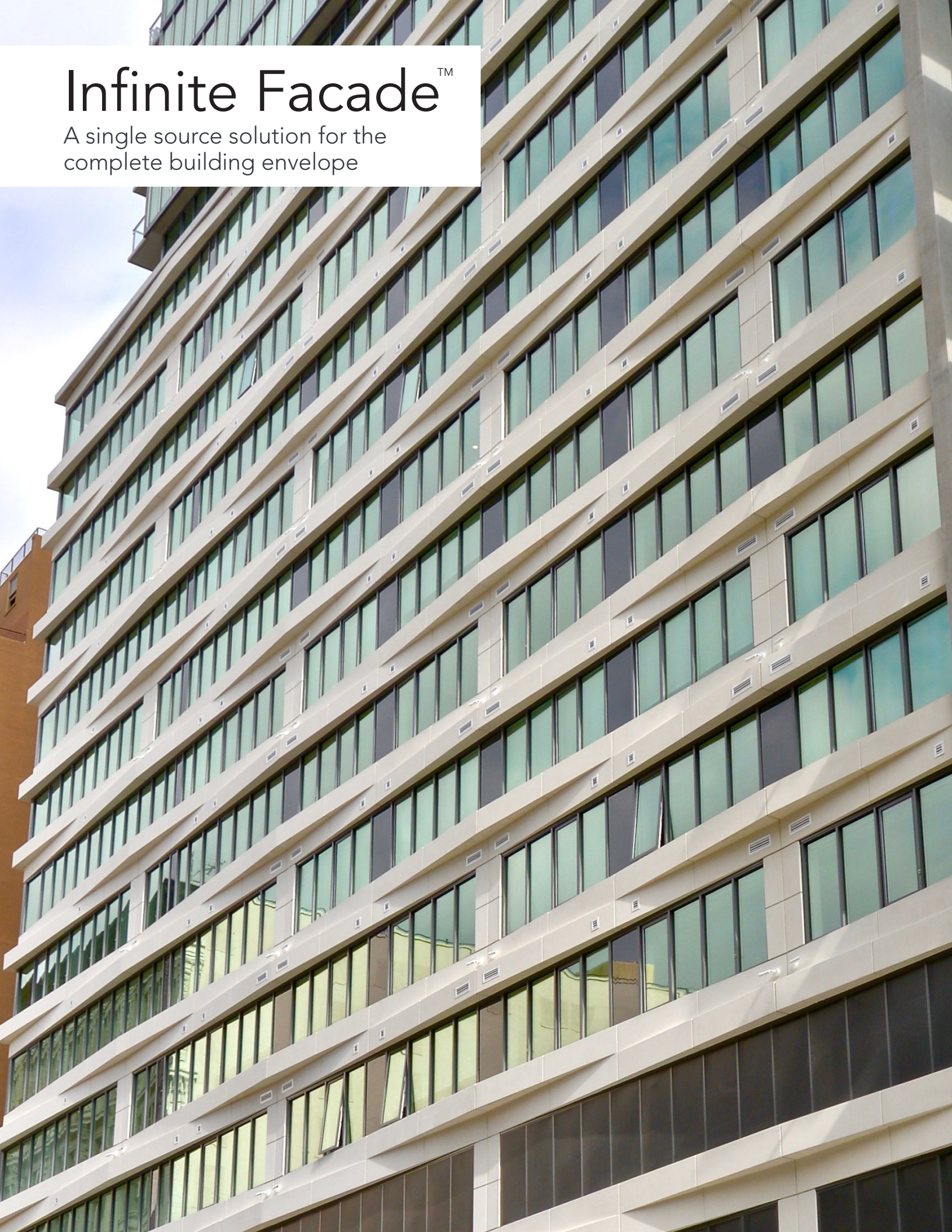


Infinite Facade™

A single source solution for the complete building envelope

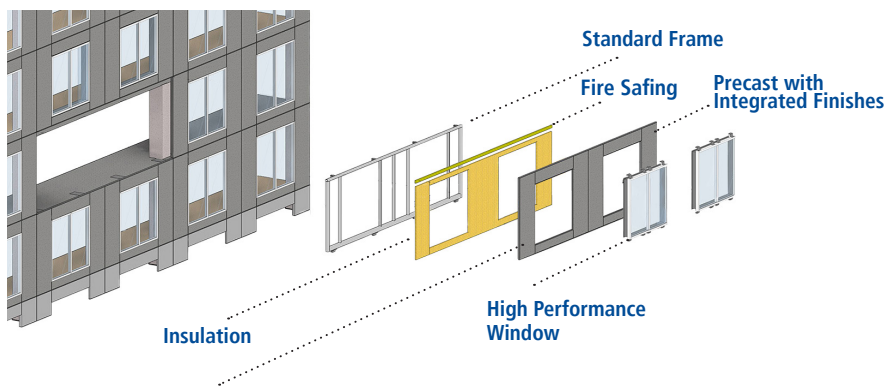


A standardized panel system that allows design teams to focus on aesthetics.

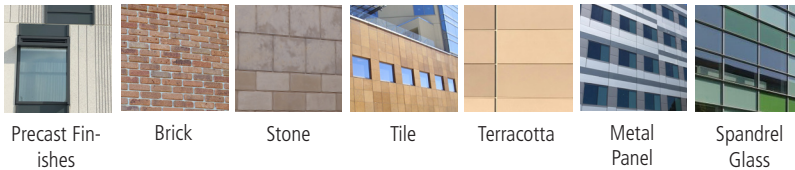
Infinite Facade redefines how owners and design teams approach the facade system. It is a single source solution for the complete building envelope that meets or exceeds energy and code requirements, utilizes a standard frame and connections, while giving design teams complete design flexibility.

Taking advantage of our *Target Value Design* (TVD) method, Infinite Facade encompasses three main design categories that streamline the design and budgeting process, enabling rapid design iterations and ensuring budget and schedule certainty.

Infinite Facade paves the way for the design team to take advantage of prefabricated systems for reduced costs, increased efficiency and less risk, all without compromising design.



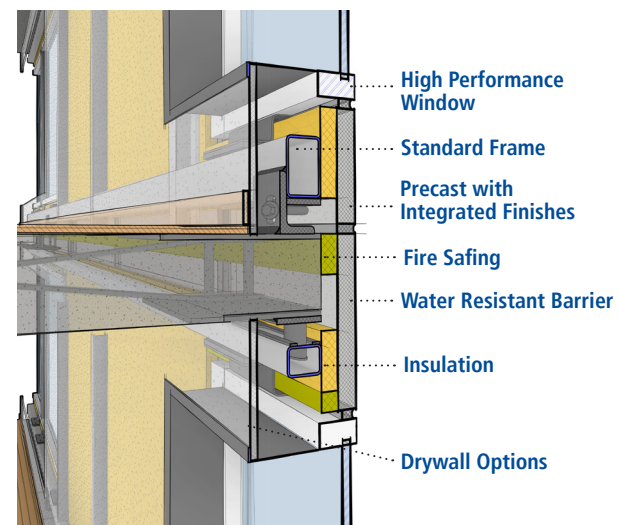
Color, texture and material flexibility



Precast Finishes Brick Stone Tile Terracotta Metal Panel Spandrel Glass

The Infinite Facade series meets or exceeds requirements for:

- Water, Air, Vapor, Energy
- High STC & OITC Values
- Thermal Climate Zone CI
- Resiliency, Seismic, Fire Performance
- CA Title 24/IECC & ASHRAE 90.1



Choose what's best for your project based on your aesthetic goal and budget.

	TVD 1	TVD 2	TVD 3
Mix Design & Colors	Standard mixes and colors	Premium mixes and colors	Premium mixes and multiple colors in the same panel
Finish	Single Architectural Finish	Multiple Architectural Finishes, Metal Panel, Formliners	Inlaid Brick, Stone, Terracotta, Polished, Spandrel Glass, etc.
Shape	Flat	Up to 4"	Custom
Window Size	40/60 to meet prescriptive requirements	50/50 Window-to-Wall ratio	Custom
Window Function	Fixed	Operable, Louvers, Vents	Custom
Window Returns	No	Yes	Yes
Panel Returns	Up to overall assembly thickness	Up to 12"	Custom

*Combination of categories may apply on a single project
Regional differences may apply*

Key Benefits

- Integrated scope for the complete envelope system
- Factory-installed windows
- Factory-installed insulation
- Single point of contact design through occupancy
- Lightweight system
- Resilient
- Manufactured off-site
- Aesthetically flexible system
- Reduced schedule
- Drywall Options